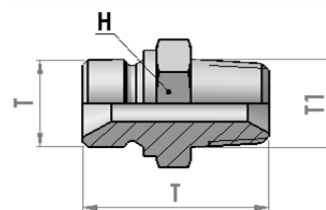
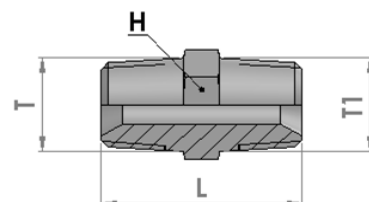


74MMCG NIPLES DI GIUNZIONE M+M BSPP - BSPT CONICO
BSPP - BSPT NIPLES M+M



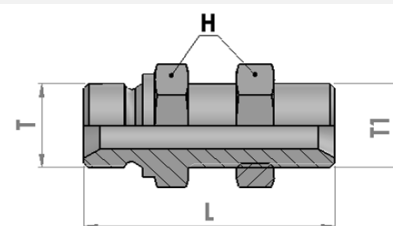
| part ref. | Thread | Thread | Dimension (mm) | |
|------------|----------|----------|----------------|-------------|
| | T | T1 | hex H | Length L |
| 74MMCG0202 | 1/8-28 | 1/8-28 | 12 | 27 |
| 74MMCG0404 | 1/4-19 | 1/4-19 | 17 | 32 |
| 74MMCG0606 | 3/8-19 | 3/8-19 | 19 | 35 |
| 74MMCG0808 | 1/2-14 | 1/2-14 | 24 | 43 |
| 74MMCG1212 | 3/4-14 | 3/4-14 | 32 | 46 |
| 74MMCG1616 | 1-11 | 1-11 | 36 | 55 |
| 74MMCG2020 | 1.1/4-11 | 1.1/4-11 | 50 | 60 |
| 74MMCG2424 | 1.1/2-11 | 1.1/2-11 | 50 | 62 |
| 74MMCG3232 | 2-11 | 2-11 | 65 | 68 |

74MMCC NIPLES DI GIUNZIONE M+M BSPT CONICO
BSPT NIPLES M+M



| part ref. | Thread | Thread | Dimension (mm) | |
|------------|----------|----------|----------------|-------------|
| | T | T1 | hex H | Length L |
| 74MMCC0404 | 1/4-19 | 1/4-19 | 14 | 25 |
| 74MMCC0606 | 3/8-19 | 3/8-19 | 19 | 35 |
| 74MMCC0808 | 1/2-14 | 1/2-14 | 22 | 45 |
| 74MMCC1212 | 3/4-14 | 3/4-14 | 27 | 47 |
| 74MMCC1616 | 1-11 | 1-11 | 35 | 58 |
| 74MMCC2020 | 1.1/4-11 | 1.1/4-11 | 45 | 63 |
| 74MMCC2424 | 1.1/2-11 | 1.1/2-11 | 50 | 67 |

74MMPP NIPLES PASSAPARETE M+M BSPP
BSP BULKHEAD NIPLES WITH LOCKNUT



| part ref. | Thread | Thread | Dimension (mm) | |
|------------|----------|----------|----------------|-------------|
| | T | T1 | hex H | Length L |
| 74MMPP0202 | 1/8-28 | 1/8-28 | 14 | 45 |
| 74MMPP0404 | 1/4-19 | 1/4-19 | 19 | 45 |
| 74MMPP0606 | 3/8-19 | 3/8-19 | 22 | 54 |
| 74MMPP0808 | 1/2-14 | 1/2-14 | 27 | 59 |
| 74MMPP1212 | 3/4-14 | 3/4-14 | 32 | 65 |
| 74MMPP1616 | 1-11 | 1-11 | 41 | 74 |
| 74MMPP2020 | 1.1/4-11 | 1.1/4-11 | 50 | 79 |