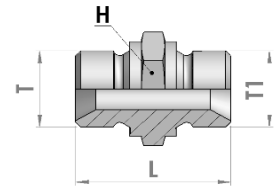


**NIPLLES AND  
ADAPTERS**

part ref.	Nipples e Adattatori - Nipples and Adaptors	Pag.
74MMGG	NIPLES DI GIUNZIONE M+M BSPP PROFILO DIN	01
74MMGG	NIPLES DI RIDUZIONE M+M BSPP TIPO DIN	01
74MMCG	NIPLES DI GIUNZIONE M+M BSPP - BSPT CONICO	02
74MMCC	NIPLES DI GIUNZIONE M+M BSPT CONICO	02
74MMPP	NIPLES PASSAPARETE M+M BSPP	02
74TMG	TAPPO MASCHIO BSPP	03
74TRGG	TAPPO DI RIDUZIONE M+F BSPP	03
74MFGG	NIPLES M+F GIREVOLE BSPP	04
74FFGG	NIPLES F+F GIREVOLE BSPP	04
74TFG	TAPPO FEMMINA GIREVOLE BSPP	05
74MSG	MEZZO NIPLES DA SALDARE BSPP	05
74BSG	BORCHIA DA SALDARE BSPP	05
74PCGG	PROLUNGA M+F BSPP	06
74PFGG	PROLUNGA F+F BSPP	06
74PRGG	PROLUNGA DI RIDUZIONE M+F BSPP	07
74MMMM	NIPLES DI GIUNZIONE M+M METRICO	07
74MMGM	NIPLES DI RIDUZIONE M+M BSPP - METRICO	08
74TMM	TAPPO MASCHIO METRICO	08
74TFM	TAPPO FEMMINA GIREVOLE METRICO	09
74PCMM	PROLUNGA M+F METRICA	09
74PFMM	PROLUNGA F+F METRICA	09
74BFG	BULLONE FORATO BSPP	10
74BFM	BULLONE FORATO METRICO	10
74BFDG	BULLONE FORATO DOPPIO BSPP	10
74OFG	OCCHIO FILETTATO BSPP	11
74OSG	OCCHIO A SALDARE BSPP	11
74OSM	OCCHIO A SALDARE METRICO	11
74XNGG	CURVA 90° M+F GIREVOLE BSPP	12
74NNGG	CURVA 90° F+F GIREVOLE BSPP	12
74YQGG	CURVA 45° M+F GIREVOLE BSPP	12
74QQGG	CURVA 45° F+F GIREVOLE BSPP	13
75XXCG	ADATTAT. 90° M+M CONICO BSPT - CILINDR. BSPP	13
75XXGO	ADATTATORE 90° M+M BSPP ORIENTABILE	13
75NXGC	ADATTATORE 90° M BSPT+F FISSA BSPP	14
75XNGG	ADATTATORE 90° M BSPP+F GIREVOLE	14
75XNCG	ADATTATORE 90° M BSPT+F GIREVOLE	14
75NNFG	ADATTATORE 90° F+F FISSA BSPP	15
753MMM	ADATTATORE M BSPP	15
753MFMG	ADATTATORE M + F GIREVOLE + M BSPP	15
753MMFG	ADATTATORE M + M + F GIREVOLE BSPP	16
753FFFG	ADATTATORE F GIREVOLE BSPP	16
753FFF	ADATTATORE F FISSA BSPP	16
754FFF	ADATTATORE CROCE - F FISSA BSPP	17
74DJ	DADO JIC PER TUBO METRICO	17

part ref.	Nipples e Adattatori - Nipples and Adaptors	Pag.
74BJ	BUSSOLA JIC PER TUBO METRICO	17
74MMJJ	NIPLES DI GIUNZIONE M+M JIC	18
74MMGJ	NIPLES DI RIDUZIONE M+M BSPP - JIC	18
74MMNJ	NIPLES DI RIDUZIONE M+M NPTF - JIC	19
74TMJ	TAPPO MASCHIO JIC	19
74TFJ	TAPPO FEMMINA GIREVOLE JIC	19
74MFJ	NIPLES M+F GIREVOLE JIC	20
74MFGJ	NIPLES M+F GIREVOLE BSPP OR - JIC	20
75XXJ	ADATTATORE 90° M+M JIC	20
75XXJGO	ADATTATORE 90° ORIENT. M+M JIC - BSPP OR	21
75XNJ	ADATTATORE 90° M+F GIREVOLE JIC	21
753MMMJ	ADATTATORE T - M JIC	22
74MMHH	NIPLES DI GIUNZIONE M+M ORFS	22
74MFGH	NIPLES M+F GIREVOLE ORFS - BSPP	22
74MMGH	NIPLES DI RIDUZIONE M+M BSPP - ORFS	23
74MMHJ	NIPLES DI RIDUZIONE M+M ORFS - JIC	23
74TMH	TAPPO MASCHIO ORFS	24
74TFH	TAPPO FEMMINA ORFS	24
74TMMF	ADATTATORE M+M+F GIR ORFS	24

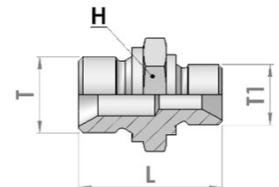
## 74MMGG NIPLES DI GIUNZIONE M+M BSPP PROFILO DIN BSPP NIPLES M+M DIN PROFILE



part ref.	Thread	Thread	Dimension (mm)	
	T	T1	hex H	Length L
74MMGG0202D	1/8-28	1/8-28	14	25
74MMGG0404D	1/4-19	1/4-19	19	29
74MMGG0606D	3/8-19	3/8-19	22	33
74MMGG0808D	1/2-14	1/2-14	27	38
74MMGG1010*	5/8-14	5/8-14	30	42
74MMGG1212D	3/4-14	3/4-14	32	43
74MMGG1616D	1-11	1-11	41	49
74MMGG2020D	1.1/4-11	1.1/4-11	50	53
74MMGG2424D	1.1/2-11	1.1/2-11	55	56
74MMGG3232D	2-11	2-11	70	59
74MMGG4040*	2.1/2-11	2.1/2-11	75	65
74MMGG4848*	3-11	3-11	90	65

\* SENZA PROFILO DIN - \* WITHOUT DIN PROFILE

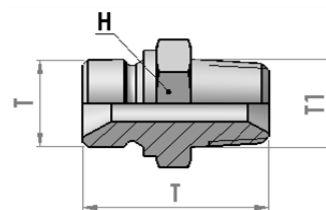
## 74MMGG NIPLES DI RIDUZIONE M+M BSPP TIPO DIN BSPP REDUCTION NIPLES M+M DIN PROFILE



part ref.	Thread	Thread	Dimension (mm)	
	T	T1	hex H	Length L
74MMGG0402D	1/4-19	1/8-28	19	28
74MMGG0602D	3/8-19	1/8-28	22	30
74MMGG0604D	3/8-19	1/4-19	22	32
74MMGG0804D	1/2-14	1/4-19	27	35
74MMGG0806D	1/2-14	3/8-19	27	36
74MMGG1006*	5/8-14	3/8-19	27	37
74MMGG1008*	5/8-14	1/2-14	30	40
74MMGG1204D	3/4-14	1/4-19	32	38
74MMGG1206D	3/4-14	3/8-19	32	38
74MMGG1208D	3/4-14	1/2-14	32	40
74MMGG1210*	3/4-14	5/8-14	32	41
74MMGG1606*	1-11	3/8-19	41	45
74MMGG1608D	1-11	1/2-14	41	47
74MMGG1610*	1-11	5/8-14	41	48
74MMGG1612D	1-11	3/4-14	41	49
74MMGG2008*	1.1/4-11	1/2-14	50	51
74MMGG2012D	1.1/4-11	3/4-14	50	53
74MMGG2016D	1.1/4-11	1-11	50	55
74MMGG2412D	1.1/2-11	3/4-14	55	54
74MMGG2416D	1.1/2-11	1-11	55	56
74MMGG2420D	1.1/2-11	1.1/4-11	55	58
74MMGG3216*	2-11	1-11	70	54
74MMGG3220D	2-11	1.1/4-11	70	66
74MMGG3224D	2-11	1.1/2-11	70	68
74MMGG4032*	2.1/2-11	2-11	75	66
74MMGG4840*	3-11	2.1/2-11	90	78

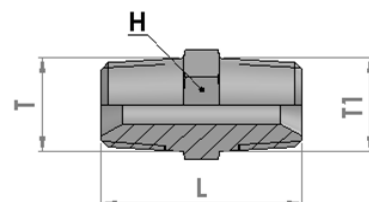
\* SENZA PROFILO DIN - \* WITHOUT DIN PROFILE

**74MMCG NIPLES DI GIUNZIONE M+M BSPP - BSPT CONICO**  
**BSPP - BSPT NIPLES M+M**



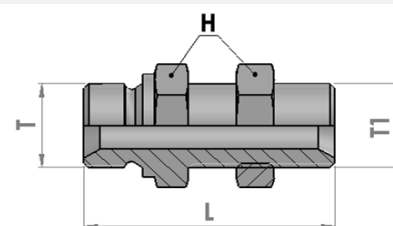
part ref.	Thread	Thread	Dimension (mm)	
	T	T1	hex H	Length L
74MMCG0202	1/8-28	1/8-28	12	27
74MMCG0404	1/4-19	1/4-19	17	32
74MMCG0606	3/8-19	3/8-19	19	35
74MMCG0808	1/2-14	1/2-14	24	43
74MMCG1212	3/4-14	3/4-14	32	46
74MMCG1616	1-11	1-11	36	55
74MMCG2020	1.1/4-11	1.1/4-11	50	60
74MMCG2424	1.1/2-11	1.1/2-11	50	62
74MMCG3232	2-11	2-11	65	68

**74MMCC NIPLES DI GIUNZIONE M+M BSPT CONICO**  
**BSPT NIPLES M+M**

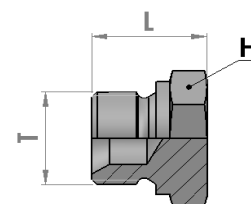


part ref.	Thread	Thread	Dimension (mm)	
	T	T1	hex H	Length L
74MMCC0404	1/4-19	1/4-19	14	25
74MMCC0606	3/8-19	3/8-19	19	35
74MMCC0808	1/2-14	1/2-14	22	45
74MMCC1212	3/4-14	3/4-14	27	47
74MMCC1616	1-11	1-11	35	58
74MMCC2020	1.1/4-11	1.1/4-11	45	63
74MMCC2424	1.1/2-11	1.1/2-11	50	67

**74MMPP NIPLES PASSAPARETE M+M BSPP**  
**BSP BULKHEAD NIPLES WITH LOCKNUT**



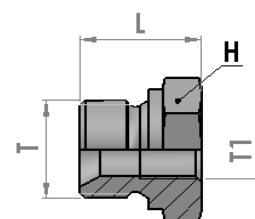
part ref.	Thread	Thread	Dimension (mm)	
	T	T1	hex H	Length L
74MMPP0202	1/8-28	1/8-28	14	45
74MMPP0404	1/4-19	1/4-19	19	45
74MMPP0606	3/8-19	3/8-19	22	54
74MMPP0808	1/2-14	1/2-14	27	59
74MMPP1212	3/4-14	3/4-14	32	65
74MMPP1616	1-11	1-11	41	74
74MMPP2020	1.1/4-11	1.1/4-11	50	79



## 74TMG TAPPO MASCHIO BSPP

### BSPP MALE PLUG

part ref.	Thread		Dimension (mm)	
	T	hex H	Length L	
74TMG02	1/8-28	14	12	
74TMG04	1/4-19	19	18	
74TMG06	3/8-19	22	21	
74TMG08	1/2-14	27	22	
74TMG10	5/8-14	30	22	
74TMG12	3/4-14	32	24	
74TMG16	1-11	41	27	
74TMG20	1.1/4-11	50	29	
74TMG24	1.1/2-11	55	35	
74TMG32	2-11	70	35	
74TMG40	2.1/2-11	85	40	
74TMG48	3-11	100	50	

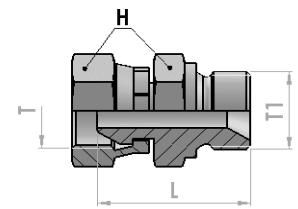


## 74TRGG TAPPO DI RIDUZIONE M+F BSPP

### BSPP REDUCTION PLUG M+F

part ref.	Thread	Thread	Dimension (mm)	
	T	T1	hex H	Length L
74TRGG0402	1/4-19	1/8-28	19	18
74TRGG0602	3/8-19	1/8-28	22	20
74TRGG0604	3/8-19	1/4-19	22	20
74TRGG0804	1/2-14	1/4-19	27	23
74TRGG0806	1/2-14	3/8-19	27	23
74TRGG1204	3/4-14	1/4-19	32	25
74TRGG1206	3/4-14	3/8-19	32	25
74TRGG1208	3/4-14	1/2-14	32	25
74TRGG1604	1-11	1/4-19	41	30
74TRGG1606	1-11	3/8-19	41	30
74TRGG1608	1-11	1/2-14	41	30
74TRGG1612	1-11	3/4-14	41	30
74TRGG2008	1.1/4-11	1/2-14	50	33
74TRGG2012	1.1/4-11	3/4-14	50	33
74TRGG2016	1.1/4-11	1-11	50	33
74TRGG2408	1.1/2-11	1/2-14	55	36
74TRGG2412	1.1/2-11	3/4-14	55	36
74TRGG2416	1.1/2-11	1-11	55	36
74TRGG2420	1.1/2-11	1.1/4-11	55	36
74TRGG3216	2-11	1-11	70	36
74TRGG3220	2-11	1.1/4-11	70	36
74TRGG3224	2-11	1.1/2-11	70	36

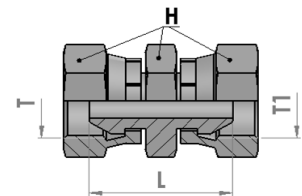
**74MFGG NIPLES M+F GIREVOLE BSPP**  
**BSPP NIPLES M+F SWIVEL**



part ref.	Thread		Dimension (mm)	
	T	T1	hex H	Length L
74MFGG0202	1/8-28	1/8-28	14	29
74MFGG0404	1/4-19	1/4-19	19	30
74MFGG0606	3/8-19	3/8-19	22	32
74MFGG0808	1/2-14	1/2-14	27	38
74MFGG1010	5/8-14	5/8-14	28	37
74MFGG1212	3/4-14	3/4-14	32	42
74MFGG1616	1-11	1-11	41	48
74MFGG2020*	1.1/4-11	1.1/4-11	50	53
74MFGG2424*	1.1/2-11	1.1/2-11	55	56
74MFGG3232*	2-11	2-11	70	60

\* Dado spinato / thrust wire nut

**74FFGG NIPLES F+F GIREVOLE BSPP**  
**BSPP NIPLES F+F SWIVEL**

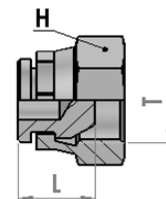


part ref.	Thread		Dimension (mm)	
	T	T1	hex H	Length L
74FFGG0202	1/8-28	1/8-28	14	25
74FFGG0404	1/4-19	1/4-19	19	26
74FFGG0606	3/8-19	3/8-19	22	28
74FFGG0808	1/2-14	1/2-14	27	32
74FFGG1010	5/8-14	5/8-14	28	30
74FFGG1212	3/4-14	3/4-14	32	34
74FFGG1616	1-11	1-11	41	38
74FFGG2020*	1.1/4-11	1.1/4-11	50	43
74FFGG2424*	1.1/2-11	1.1/2-11	55	45
74FFGG3232*	2-11	2-11	70	45

\* Dado spinato / thrust wire nut

## 74TFG

### TAPPO FEMMINA GIREVOLE BSPP BSPP SWIVEL FEMALE PLUG

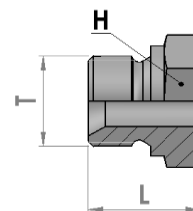


part ref.	Thread	Dimension (mm)	
	T	hex H	Length L
74TFG02	1/8-28	14	13
74TFG04	1/4-19	19	15
74TFG06	3/8-19	22	15
74TFG08	1/2-14	27	18
74TFG10	5/8-14	27	18
74TFG12	3/4-14	32	20
74TFG16	1-11	41	21
74TFG20*	1.1/4-11	50	22
74TFG24*	1.1/2-11	55	22
74TFG32*	2-11	70	22

\* Dado spinato / thrust wire nut

## 74MSG

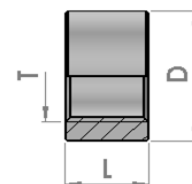
### MEZZO NIPLES DA SALDARE BSPP BSPP HALF NIPLES WELDABLE



part ref.	Thread	Dimension (mm)	
	T	hex H	Length L
74MSG02	1/8-28	14	14
74MSG04	1/4-19	19	18
74MSG06	3/8-19	22	20
74MSG08	1/2-14	27	23
74MSG12	3/4-14	32	27
74MSG16	1-11	41	30
74MSG20	1.1/4-11	50	32
74MSG24	1.1/2-11	55	34
74MSG32	2-11	70	36

## 74BSG

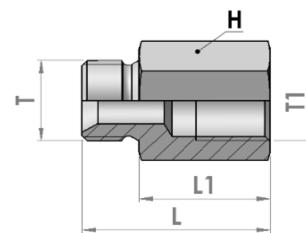
### BORCHIA DA SALDARE BSPP BSPP WELDABLE FEMALE



part ref.	Thread	Dimension (mm)	
	T	D	Length L
74BSG04	1/4-19	22	16
74BSG06	3/8-19	26	17
74BSG08	1/2-14	30	18
74BSG12	3/4-14	38	20
74BSG16	1-11	46	25
74BSG20	1.1/4-11	55	26
74BSG24	1.1/2-11	62	30
74BSG32	2-11	70	30

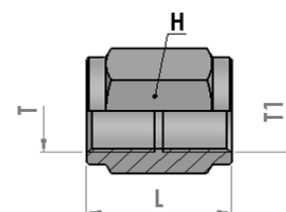


## 74PCGG PROLUNGA M+F BSPP BSPP EXTENDED FIXED M+F



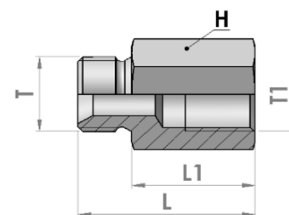
part ref.	Thread		Dimension (mm)			
	T	T1	hex	bar	Length L	Length L1
74PCGG02-18	1/8-28	1/8-28	14	300	26	18
74PCGG02-30	1/8-28	1/8-28	14	300	38	30
74PCGG02-15	1/8-28	1/8-28	14	300	23	15
74PCGG04-20	1/4-19	1/4-19	19	300	31	20
74PCGG04-30	1/4-19	1/4-19	19	300	41	30
74PCGG04-35	1/4-19	1/4-19	19	300	46	35
74PCGG04-40	1/4-19	1/4-19	19	300	51	40
74PCGG04-25	1/4-19	1/4-19	19	300	36	25
74PCGG06-25	3/8-19	3/8-19	22	300	37	25
74PCGG06-22	3/8-19	3/8-19	22	300	34	22
74PCGG06-40	3/8-19	3/8-19	22	300	52	40
74PCGG06-45	3/8-19	3/8-19	22	300	57	45
74PCGG06-20	3/8-19	3/8-19	22	300	32	20
74PCGG06-32	3/8-19	3/8-19	22	300	44	32
74PCGG06-44	3/8-19	3/8-19	22	300	56	44
74PCGG08-25	1/2-14	1/2-14	27	250	39	25
74PCGG08-46	1/2-14	1/2-14	27	250	60	46
74PCGG08-31	1/2-14	1/2-14	27	250	45	31
74PCGG08-60	1/2-14	1/2-14	27	250	74	60
74PCGG12-30	3/4-14	3/4-14	32	200	46	30
74PCGG12-48	3/4-14	3/4-14	32	200	64	48
74PCGG12-40	3/4-14	3/4-14	32	200	56	40
74PCGG16-31	1-11	1-11	41	200	50	31
74PCGG16-70	1-11	1-11	41	200	89	70
74PCGG20-32	1.1/4-11	1.1/4-11	50	150	52	32
74PCGG20-70	1.1/4-11	1.1/4-11	50	150	90	70
74PCGG24-35	1.1/2-11	1.1/2-11	55	150	57	35
74PCGG24-75	1.1/2-11	1.1/2-11	55	150	97	75
74PCGG32-102	2-11	2-11	70	150	127	102

## 74PFGG PROLUNGA F+F BSPP BSPP FIXED F+F

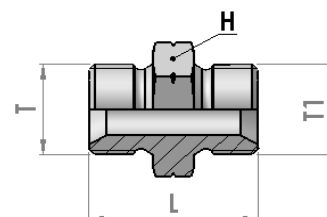


part ref.	Thread		Dimension (mm)		
	T	T1	hex	bar	Length L
74PFGG0202	1/8-28	1/8-28	14	250	22
74PFGG0404	1/4-19	1/4-19	19	300	34
74PFGG0606	3/8-19	3/8-19	22	300	38
74PFGG0808	1/2-14	1/2-14	27	250	42
74PFGG1212	3/4-14	3/4-14	32	200	50
74PFGG1616	1-11	1-11	41	200	56
74PFGG2020	1.1/4-11	1.1/4-11	50	150	60
74PFGG2424	1.1/2-11	1.1/2-11	55	150	55
74PFGG3232	2-11	2-11	70	150	70

## 74PRGG PROLUNGA DI RIDUZIONE M+F BSPP BSPP EXTENDED FIXED REDUCING M+F



part ref.	Thread		Dimension (mm)		
	T	T1	hex H	Length L	Length L1
74PRGG0204	1/8-28	1/4-19	19	22	30
74PRGG0402	1/4-19	1/8-28	19	31	20
74PRGG0406	1/4-19	3/8-19	22	33	22
74PRGG0408	1/4-19	1/2-14	27	36	25
74PRGG0412	1/4-19	3/4-14	32	42	31
74PRGG0602	3/8-19	1/8-28	22	30	22
74PRGG0604	3/8-19	1/4-19	22	31	22
74PRGG0608	3/8-19	1/2-14	27	38	25
74PRGG0612	3/8-19	3/4-14	32	44	31
74PRGG0804	1/2-14	1/4-19	27	32	22
74PRGG0806	1/2-14	3/8-19	27	36	22
74PRGG0812	1/2-14	3/4-14	32	46	31
74PRGG0816	1/2-14	1-11	41	47	32
74PRGG1206	3/4-14	3/8-19	32	40	23
74PRGG1208	3/4-14	1/2-14	32	43	26
74PRGG1216	3/4-14	1-11	41	49	32
74PRGG1220	3/4-14	1.1/4-11	50	49	33
74PRGG1606	1-11	3/8-19	41	44	25
74PRGG1608	1-11	1/2-14	41	55	26
74PRGG1612	1-11	3/4-14	41	50	31
74PRGG1620	1-11	1.1/4-11	50	52	33
74PRGG1624	1-11	1.1/2-11	55	54	35
74PRGG1632	1-11	2-11	70	65	43
74PRGG2012	1.1/4-11	3/4-14	50	54	32
74PRGG2016	1.1/4-11	1-11	50	54	32
74PRGG2024	1.1/4-11	1.1/2-11	55	35	56
74PRGG2420	1.1/2-11	1.1/4-11	55	33	55
74PRGG2432	1.1/2-11	2-11	70	43	65
74PRGG3220	2-11	1.1/4-11	70	43	68
74PRGG3224	2-11	1.1/2-11	70	43	68

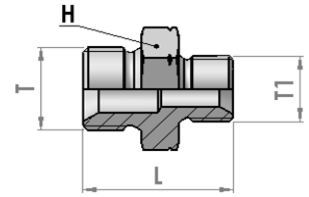


## 74MMMM NIPLES DI GIUNZIONE M+M METRICO METRIC NIPLES M+M

part ref.	Thread		Dimension (mm)	
	T	T1	hex H	Length L
74MMMM1010	M10-1	M10-1	14	25
74MMMM1212	M12-1,5	M12-1,5	17	29
74MMMM1414	M14-1,5	M14-1,5	19	31
74MMMM1616	M16-1,5	M16-1,5	22	34
74MMMM1818	M18-1,5	M18-1,5	24	36
74MMMM2020	M20-1,5	M20-1,5	27	38
74MMMM2222	M22-1,5	M22-1,5	27	38
74MMMM2424	M24-1,5	M24-1,5	30	36
74MMMM2626	M26-1,5	M26-1,5	32	43
74MMMM3030	M30-1,5	M30-1,5	38	43

## 74MMGM NIPLES DI RIDUZIONE M+M BSPP - METRICO

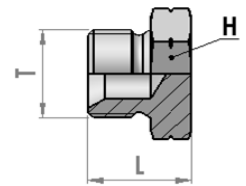
### BSPP - METRIC REDUCTION NIPLES M+M



part ref.	Thread		Dimension (mm)	
	T	T1	hex H	Length L
74MMGM0210	1/8-28	M10-1	14	25
74MMGM0410	1/4-19	M10-1	19	28
74MMGM0412	1/4-19	M12-1,5	19	29
74MMGM0414	1/4-19	M14-1,5	19	30
74MMGM0416	1/4-19	M16-1,5	22	33
74MMGM0418	1/4-19	M18-1,5	24	33
74MMGM0422	1/4-19	M22-1,5	27	35
74MMGM0612	3/8-19	M12-1,5	22	31
74MMGM0614	3/8-19	M14-1,5	22	33
74MMGM0616	3/8-19	M16-1,5	22	35
74MMGM0618	3/8-19	M18-1,5	24	35
74MMGM0620	3/8-19	M20-1,5	27	36
74MMGM0622	3/8-19	M22-1,5	27	37
74MMGM0812	1/2-14	M12-1,5	27	33
74MMGM0814	1/2-14	M14-1,5	27	34
74MMGM0816	1/2-14	M16-1,5	27	38
74MMGM0818	1/2-14	M18-1,5	27	37
74MMGM0820	1/2-14	M20-1,5	27	39
74MMGM0822	1/2-14	M22-1,5	27	38
74MMGM0824	1/2-14	M24-1,5	27	38
74MMGM1018	5/8-14	M18-1,5	27	37
74MMGM1022	5/8-14	M22-1,5	27	38
74MMGM1218	3/4-14	M18-1,5	32	42
74MMGM1222	3/4-14	M22-1,5	32	42
74MMGM1226	3/4-14	M26-1,5	32	43
74MMGM1230	3/4-14	M30-1,5	36	45
74MMGM1622	1-11	M22-1,5	41	44
74MMGM1626	1-11	M26-1,5	41	44
74MMGM1630	1-11	M30-1,5	41	47

## 74TMM TAPPO MASCHIO METRICO

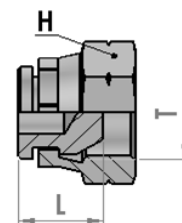
### METRIC MALE PLUG



part ref.	Thread	Dimension (mm)	
	T	hex H	Length L
74TMM10	M10-1	14	12
74TMM12	M12-1,5	17	16
74TMM14	M14-1,5	19	18
74TMM16	M16-1,5	22	20
74TMM18	M18-1,5	24	21
74TMM20	M20-1,5	27	22
74TMM22	M22-1,5	27	24
74TMM24	M24-1,5	30	24
74TMM26	M26-1,5	32	24
74TMM30	M30-1,5	38	27

## 74TFM

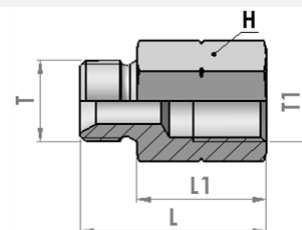
### TAPPO FEMMINA GIREVOLE METRICO METRIC SWIVEL FEMALE PLUG



part ref.	Thread	Dimension (mm)	
	T	hex H	Length L
74TFM10	M10-1	14	17
74TFM14	M14-1,5	19	19
74TFM16	M16-1,5	22	21
74TFM18	M18-1,5	24	23
74TFM20	M20-1,5	27	24
74TFM22	M22-1,5	27	24
74TFM26	M26-1,5	32	28

## 74PCMM

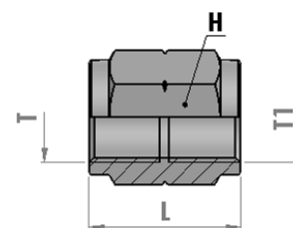
### PROLUNGA M+F METRICA METRIC EXTENDED FIXED M+F



part ref.	Thread	Thread	Dimension (mm)		
	T	T1	hex H	Length L	Length L1
74PCMM10-16	M10-1	M10-1	14	26	16
74PCMM12-36	M12-1,5	M12-1,5	17	47	36
74PCMM14-36	M14-1,5	M14-1,5	19	47	36
74PCMM16-22	M16-1,5	M16-1,5	22	35	22
74PCMM16-40	M16-1,5	M16-1,5	22	54	40
74PCMM18-22	M18-1,5	M18-1,5	24	36	22
74PCMM18-41	M18-1,5	M18-1,5	24	55	41
74PCMM18-42	M18-1,5	M18-1,5	24	56	42
74PCMM20-22	M20-1,5	M20-1,5	27	37	22
74PCMM20-45	M20-1,5	M20-1,5	27	60	45
74PCMM22-25	M22-1,5	M22-1,5	27	40	25
74PCMM22-45	M22-1,5	M22-1,5	27	60	45

## 74PFMM

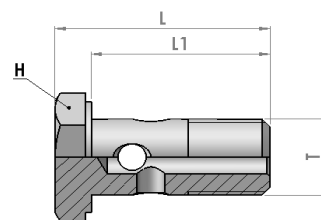
### PROLUNGA F+F METRICA METRIC FIXED F+F



part ref.	Thread	Thread	Dimension (mm)	
	T	T1	hex H	Length L
74PFMM1010	M10-1	M10-1	14	25
74PFMM1212	M12-1,5	M12-1,5	17	25
74PFMM1414	M14-1,5	M14-1,5	19	35
74PFMM1616	M16-1,5	M16-1,5	22	35
74PFMM1818	M18-1,5	M18-1,5	24	45
74PFMM2222	M22-1,5	M22-1,5	27	45

## 74BFG

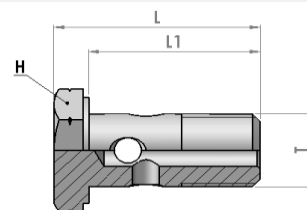
### BULLONE FORATO BSPP BSPP BOLT



part ref.	Thread	Dimension (mm)		
	T	hex E	Length L	Length L1
74BFG02	1/8-28	14	24	19,5
74BFG04	1/4-19	19	34,5	28,5
74BFG06	3/8-19	22	40,5	33
74BFG08	1/2-14	27	46	38
74BFG10	5/8-14	30	50	42
74BFG12	3/4-14	32	56	47
74BFG16	1-11	41	69	58

## 74BFM

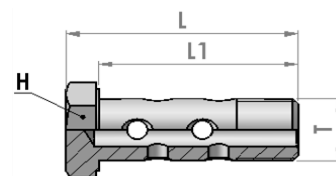
### BULLONE FORATO METRICO METRIC BOLT



part ref.	Thread	Dimension (mm)		
	T	hex H	Length L	Length L1
74BFM08	M8-1	12	21	16
74BFM10	M10-1	14	24	19,5
74BFM12	M12-1,5	17	31,5	25,5
74BFM14	M14-1,5	19	34	28,5
74BFM16	M16-1,5	22	41	33
74BFM18	M18-1,5	24	44,5	36,5
74BFM20	M20-1,5	27	46	38
74BFM22	M22-1,5	27	46	38
74BFM26	M26-1,5	32	56	45,5
74BFM30	M30-1,5	36	66	55

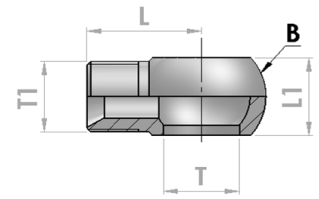
## 74BFDG

### BULLONE FORATO DOPPIO BSPP BSPP DOUBLE BOLT



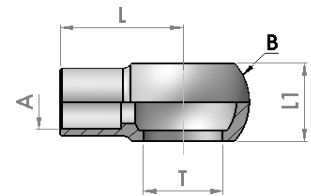
part ref.	Thread	Dimension (mm)		
	T	hex H	Length L	Length L1
74BFDG02	1/8-28	14	36,5	30,5
74BFDG04	1/4-19	19	49	43
74BFDG06	3/8-19	22	57	49,5
74BFDG08	1/2-14	27	72	63
74BFDG12	3/4-14	32	86,5	77,5
74BFDG16	1-11	41	108,5	97,5

**74OFG**      **OCCHIO FILETTATO BSPP**  
**BSPP THREAD BANJO**



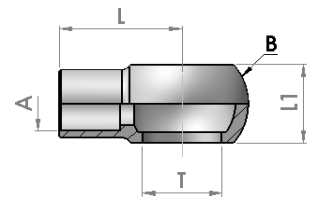
part ref.	Size	Thread	Dimension (mm)		
	T	T1	Ball B	Length L	Length L1
74OFG0202	1/8"	1/8-28	17	24	10
74OFG0404	1/4"	1/4-19	24	25	14
74OFG0606	3/8"	3/8-19	28	28	18
74OFG0808	1/2"	1/2-14	35	32	22
74OFG1212	3/4"	3/4-14	45	40	29
74OFG1616	1"	1-11	60	44	37

**74OSG**      **OCCHIO A SALDARE BSPP**  
**BSPP WELDABLE BANJO**



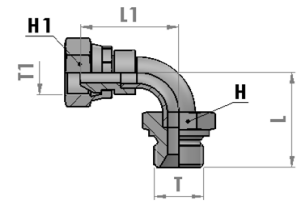
part ref.	Size	Ø	Dimension (mm)		
	T	A	Ball B	Length L	Length L1
74OSG04-10	1/4"	10	24	24	14
74OSG06-12	3/8"	12	28	28	18
74OSG06-14	3/8"	14	28	28	18
74OSG08-15	1/2"	15	35	32	22
74OSG08-16	1/2"	16	35	35	22
74OSG12-20	3/4"	20	45	40	29
74OSG16-27	1"	27	58	57	37

**74OSM**      **OCCHIO A SALDARE METRICO**  
**METRIC WELDABLE BANJO**



part ref.	Size	Ø	Dimension (mm)		
	T	A	Ball B	Length L	Length L1
74OSM08-5	8	5	14	15	8
74OSM10-6	10	6	17	17	10
74OSM12-8	12	8	20	22	12
74OSM14-10	14	10	24	24	14
74OSM16-12	16	12	28	28	18
74OSM18-14	18	14	32	29	20
74OSM22-16	22	16	35	32	22

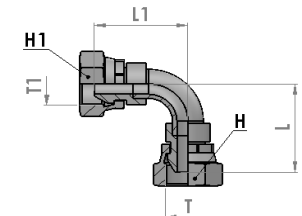
**74XNGG CURVA 90° M+F GIREVOLE BSPP**  
**M+F SWIVEL BSPP 90° ELBOW**



part ref.	Thread	Thread	Dimension (mm)			
	T	T1	hex H	hex H1	Length L	Length L1
74XNGG0202	1/8-28	1/8-28	14	14	30	30
74XNGG0404	1/4-19	1/4-19	19	19	32	31
74XNGG0606	3/8-19	3/8-19	22	22	37	39
74XNGG0808	1/2-14	1/2-14	27	27	43	46
74XNGG1212	3/4-14	3/4-14	32	32	60	60
74XNGG1616	1-11	1-11	41	38	70	70
74XNGG2020*	1.1/4-11	1.1/4-11	50	50	79	75
74XNGG2424*	1.1/2-11	1.1/2-11	55	55	100	100
74XNGG3232*	2-11	2-11	70	70	121	113

\* Dado spinato / thrust wire nut

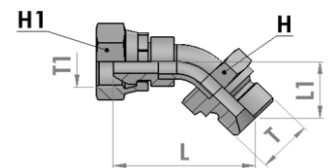
**74NNGG CURVA 90° F+F GIREVOLE BSPP**  
**M+F SWIVEL BSPP 90° ELBOW**



part ref.	Thread	Thread	Dimension (mm)			
	T	T1	hex H	hex H1	Length L	Length L1
74NNGG0202	1/8-28	1/8-28	14	14	30	30
74NNGG0404	1/4-19	1/4-19	19	19	31	31
74NNGG0606	3/8-19	3/8-19	22	22	39	39
74NNGG0808	1/2-14	1/2-14	27	27	46	46
74NNGG1212	3/4-14	3/4-14	32	32	56	56
74NNGG1616	1-11	1-11	38	38	65	65
74NNGG2020*	1.1/4-11	1.1/4-11	50	50	100	100
74NNGG2424*	1.1/2-11	1.1/2-11	55	55	105	105
74NNGG3232*	2-11	2-11	70	70	113	113

\* Dado spinato / thrust wire nut

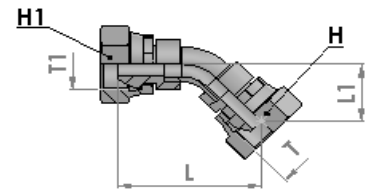
**74YQGG CURVA 45° M+F GIREVOLE BSPP**  
**M+F SWIVEL BSPP 45° ELBOW**



part ref.	Thread	Thread	Dimension (mm)			
	T	T1	hex H	hex H1	Length L	Length L1
74YQGG0202	1/8-28	1/8-28	14	14	34	16
74YQGG0404	1/4-19	1/4-19	19	19	44	17
74YQGG0606	3/8-19	3/8-19	22	22	52	21
74YQGG0808	1/2-14	1/2-14	27	27	53	24
74YQGG1212	3/4-14	3/4-14	32	32	66	26
74YQGG1616	1-11	1-11	41	38	80	30
74YQGG2020*	1.1/4-11	1.1/4-11	50	50	90	33
74YQGG2424*	1.1/2-11	1.1/2-11	55	55	102	40
74YQGG3232*	2-11	2-11	70	70	132	52

\* Dado spinato / thrust wire nut

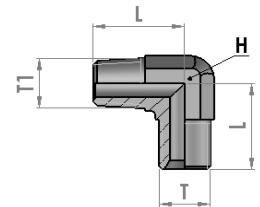
**74QQGG CURVA 45° F+F GIREVOLE BSPP**  
**F+F SWIVEL BSPP 45° ELBOW**



part ref.	Thread		Dimension (mm)			
	T	T1	hex H	hex H1	Length L	Length L1
74QQGG0404	1/4-19	1/4-19	19	19	43	17
74QQGG0606	3/8-19	3/8-19	22	22	54	21
74QQGG0808	1/2-14	1/2-14	27	27	56	24
74QQGG1212	3/4-14	3/4-14	32	32	62	26
74QQGG1616	1-11	1-11	38	38	70	35
74QQGG2020*	1.1/4-11	1.1/4-11	50	50	80	40
74QQGG2424*	1.1/2-11	1.1/2-11	55	55	100	50
74QQGG3232*	2-11	2-11	70	70	120	56

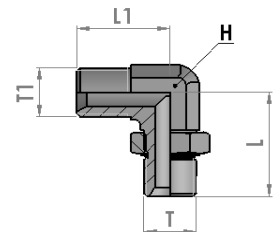
\* Dado spinato / thrust wire nut

**75XXCG ADATTAT. 90° M+M CONICO BSPT - CILINDR. BSPP**  
**ADAPTER M+M BSPT - BSPP 90° ELBOW**



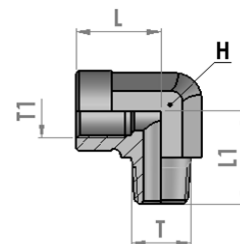
part ref.	Thread		Dimension (mm)	
	T	T1	hex H	Length L
75XXCG0202L	1/8-28	1/8-28	12	20
75XXCG0404L	1/4-19	1/4-19	14	27
75XXCG0606L	3/8-19	3/8-19	19	30
75XXCG0808L	1/2-14	1/2-14	22	37
75XXCG1212L	3/4-14	3/4-14	27	40
75XXCG1616L	1-11	1-11	33	50
75XXCG2020L	1.1/4-11	1.1/4-11	41	52

**75XXGO ADATTATORE 90° M+M BSPP ORIENTABILE**  
**ADAPTER BSPT - BSPP 90° ELBOW**



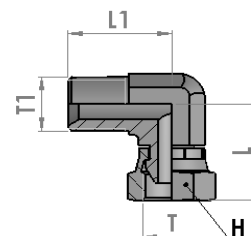
part ref.	Thread		Dimension (mm)		
	T	T1	hex H	Length L	Length L1
75XXGO0404	1/4-19	1/4-19	14	32	27
75XXGO0606	3/8-19	3/8-19	19	37	32
75XXGO0808	1/2-14	1/2-14	22	43	37
75XXGO1212	3/4-14	3/4-14	27	49	40
75XXGO1616	1-11	1-11	33	52	50
75XXGO2020	1.1/4-11	1.1/4-11	41	57	52
75XXGO2424	1.1/2-11	1.1/2-11	48	61	59





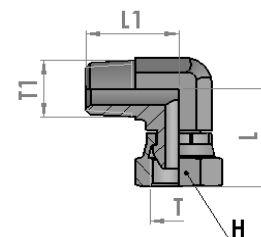
**75NXGC**      **ADATTATORE 90° M BSPT+F FISSA BSPP**  
**ADAPTER M BSPT - F BSPP FIXED 90° ELBOW**

part ref.	Thread	Thread	Dimension (mm)		
	T	T1	hex H	Length L	Length L1
75NXGC0202	1/8-28	1/8-28	14	20	17
75NXGC0404	1/4-19	1/4-19	19	28	22
75NXGC0606	3/8-19	3/8-19	22	31	26
75NXGC0808	1/2-14	1/2-14	27	37	31
75NXGC1212	3/4-14	3/4-14	33	40	35
75NXGC1616	1-11	1-11	41	56	44



**75XNGG**      **ADATTATORE 90° M BSPP+F GIREVOLE**  
**ADAPTER M BSPP - F BSPP SWIVEL 90° ELBOW**

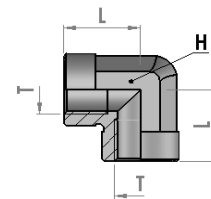
part ref.	Thread	Thread	Dimension (mm)		
	T	T1	hex H	Length L	Length L1
75XNGG0404	1/4-19	1/4-19	19	29	27
75XNGG0606	3/8-19	3/8-19	22	34	32
75XNGG0808	1/2-14	1/2-14	27	40	37
75XNGG1212	3/4-14	3/4-14	32	46	40
75XNGG1616	1-11	1-11	41	52	50
75XNGG2020	1.1/4-11	1.1/4-11	50	57	52
75XNGG2424	1.1/2-11	1.1/2-11	55	64	59



**75XNCG**      **ADATTATORE 90° M BSPT+F GIREVOLE**  
**ADAPTER M BSPT - F BSPP SWIVEL 90° ELBOW**

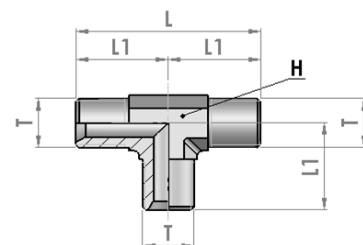
part ref.	Thread	Thread	Dimension (mm)		
	T	T1	hex H	Length L	Length L1
75XNCG0404	1/4-19	1/4-19	19	29	28
75XNCG0606	3/8-19	3/8-19	22	34	32
75XNCG0808	1/2-14	1/2-14	27	40	36
75XNCG1212	3/4-14	3/4-14	32	46	40
75XNCG1616	1-11	1-11	41	52	50
75XNCG2020	1.1/4-11	1.1/4-11	50	57	52
75XNCG2424	1.1/2-11	1.1/2-11	55	64	59

**75NNFG ADATTATORE 90° F+F FISSA BSPP**  
ADAPTER F - F BSPP FIXED 90° ELBOW



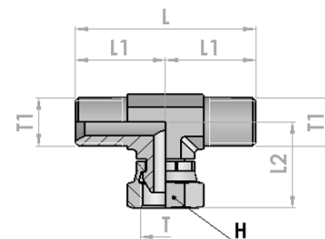
part ref.	Thread	Dimension (mm)	
	T	hex H	Length L
75NNFG0404	1/4-19	19	22
75NNFG0606	3/8-19	22	26
75NNFG0808	1/2-14	27	31
75NNFG1212	3/4-14	33	35
75NNFG1616	1-11	41	44
75NNFG2020	1.1/4-11	48	52

**753MMM ADATTATORE M BSPP**  
ADAPTER M BSPP - TEE



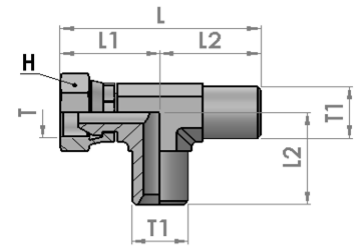
part ref.	Thread	Dimension (mm)		
	T	hex H	Length L	Length L1
753MMM04L	1/4-19	14	54	27
753MMM06L	3/8-19	19	60	30
753MMM08L	1/2-14	22	74	37
753MMM12L	3/4-14	27	80	40
753MMM16L	1-11	33	100	50
753MMM20L	1.1/4-11	41	104	52

**753MFMG ADATTATORE M + F GIREVOLE + M BSPP**  
ADAPTER M + SWIVEL F + M BSPP - TEE



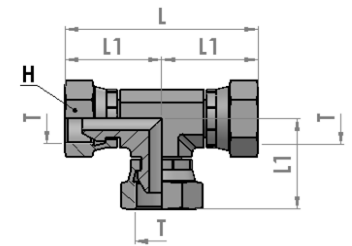
part ref.	Thread	Thread	Dimension (mm)			
	T	T1	hex H	Length L	Length L1	Length L2
753MFMG04	1/4-19	1/4-19	19	54	27	29
753MFMG06	3/8-19	3/8-19	22	63	32	34
753MFMG08	1/2-14	1/2-14	27	74	37	40
753MFMG12	3/4-14	3/4-14	32	80	40	46
753MFMG16	1-11	1-11	41	100	50	52
753MFMG20	1.1/4-11	1.1/4-11	50	104	52	57

**753MMFG** ADATTATORE M + M + F GIREVOLE BSPP  
ADAPTER M + M + SWIVEL F BSPP - TEE



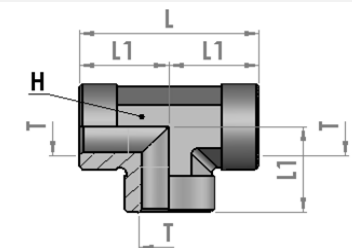
part ref.	Thread		Dimension (mm)			
	T	T1	hex H	Length L	Length L1	Length L2
753MMFG04	1/4-19	1/4-19	19	58	31	27
753MMFG06	3/8-19	3/8-19	22	66	34	32
753MMFG08	1/2-14	1/2-14	27	77	40	37
753MMFG12	3/4-14	3/4-14	32	86	46	40
753MMFG16	1-11	1-11	41	102	52	50
753MMFG20	1.1/4-11	1.1/4-11	50	109	57	52

**753FFFG** ADATTATORE F GIREVOLE BSPP  
ADAPTER SWIVEL F BSPP - TEE



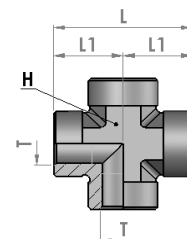
part ref.	Thread		Dimension (mm)		
	T		hex H	Length L	Length L1
753FFFG04	1/4-19		19	58	29
753FFFG06	3/8-19		22	68	34
753FFFG08	1/2-14		27	80	40
753FFFG12	3/4-14		32	91	46
753FFFG16	1-11		41	104	52

**753FFF** ADATTATORE F FISSA BSPP  
ADAPTER FIXED F BSPP - TEE



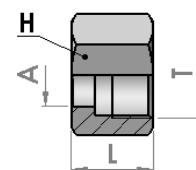
part ref.	Thread		Dimension (mm)		
	T		hex H	Length L	Length L1
753FFF02	1/8-28		14	34	17
753FFF04	1/4-19		19	44	22
753FFF06	3/8-19		22	52	26
753FFF08	1/2-14		27	62	31
753FFF12	3/4-14		33	70	35
753FFF16	1-11		41	88	44
753FFF20	1.1/4-11		48	100	50

**754FFFF** ADATTATORE CROCE - F FISSA BSPP  
ADAPTER CROSS FIXED F BSPP



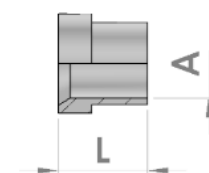
part ref.	Thread	Dimension (mm)		
	T	hex H	Length L	Length L1
754FFFF04	1/4-19	14	34	17
754FFFF06	3/8-19	19	44	22
754FFFF08	1/2-14	22	52	26
754FFFF12	3/4-14	27	62	31
754FFFF16	1-11	33	70	35

**74DJ** DADO JIC PER TUBO METRICO  
JIC NUT FOR METRIC PIPE

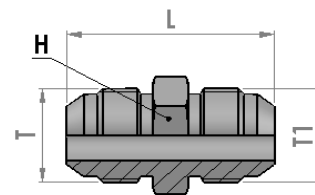


part ref.	Thread	Dimension (mm)		
	T	Ø A	Length L	hex H
74DJ04	7/16-20	6	15	14
74DJ05	1/2-20	8	17	16
74DJ06	9/16-18	10	18	17
74DJ08	3/4-16	12	21	22
74DJ10	7/8-14	14	24	27
74DJ12	1.1/16-12	20	26	32
74DJ16	1.5/16-12	25	28	38
74DJ20	1.5/8-12	32	31	50
74DJ24	1.7/8-12	38	36	57

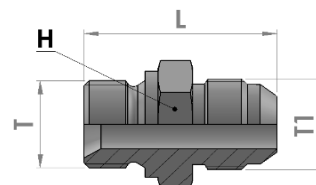
**74BJ** BUSSOLA JIC PER TUBO METRICO  
JIC SLEEVE FOR METRIC PIPE



part ref.	For Thread	Dimension (mm)	
		Ø A	Length L
74BJ04	7/16-20	6	10
74BJ05	1/2-20	8	11
74BJ06	9/16-18	10	12
74BJ08	3/4-16	12	14
74BJ10	7/8-14	14	16
74BJ12	1.1/16-12	20	17
74BJ16	1.5/16-12	25	19
74BJ20	1.5/8-12	32	23
74BJ24	1.7/8-12	38	28

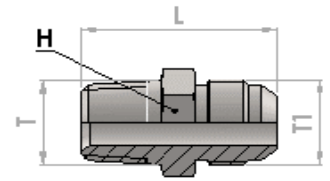
**74MMJJ**
**NIPLES DI GIUNZIONE M+M JIC**  
**JIC NIPLES M+M**


part ref.	Thread		Dimension (mm)	
	T	T1	hex H	Length L
74MMJJ0404	7/16-20	7/16-20	12	34
74MMJJ0505	1/2-20	1/2-20	14	34
74MMJJ0606	9/16-18	9/16-18	15	35
74MMJJ0808	3/4-16	3/4-16	19	41
74MMJJ1010	7/8-14	7/8-14	24	47
74MMJJ1212	1.1/16-12	1.1/16-12	27	55
74MMJJ1414	1.3/16-12	1.3/16-12	30	55
74MMJJ1616	1.5/16-12	1.5/16-12	34	56
75MMJJ2020	1.5/8-12	1.5/8-12	42	60
74MMJJ2424	1.7/8-12	1.7/8-12	50	69

**74MMGJ**
**NIPLES DI RIDUZIONE M+M BSPP - JIC**  
**BSPP - JIC REDUCTION NIPLES M+M**


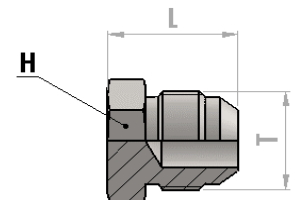
part ref.	Thread		Dimension (mm)	
	T	T1	hex H	Length L
74MMGJ0204	1/8-28	7/16-20	16	29
74MMGJ0206	1/8-28	9/16-18	16	29
74MMGJ0404	1/4-19	7/16-20	19	34
74MMGJ0405	1/4-19	1/2-20	19	34
74MMGJ0406	1/4-19	9/16-18	19	34
74MMGJ0408	1/4-19	3/4-16	22	37
74MMGJ0604	3/8-19	7/16-20	22	34
74MMGJ0606	3/8-19	9/16-18	22	34
74MMGJ0608	3/8-19	3/4-16	22	38
74MMGJ0610	3/8-19	7/8-14	24	40
74MMGJ0806	1/2-14	9/16-18	27	38
74MMGJ0808	1/2-14	3/4-16	27	41
74MMGJ0810	1/2-14	7/8-14	27	43
74MMGJ0812	1/2-14	1.1/16-12	30	47
74MMGJ1208	3/4-14	3/4-16	32	45
74MMGJ1210	3/4-14	7/8-14	32	47
74MMGJ1212	3/4-14	1.1/16-12	32	50
74MMGJ1214	3/4-14	1.3/16-12	36	50
74MMGJ1216	3/4-14	1.5/16-12	41	51
74MMGJ1616	1-11	1.5/16-12	41	53
74MMGJ1620	1-11	1.5/8-12	50	55
74MMGJ2020	1.1/4-11	1.5/8-12	50	58
74MMGJ2424	1.1/2-11	1.7/8-12	60	65

## 74MMNJ NIPLES DI RIDUZIONE M+M NPTF - JIC BSPP - JIC REDUCTION NIPLES M+M



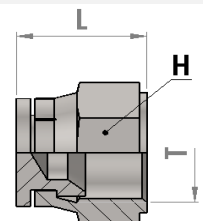
part ref.	Thread		Dimension (mm)	
	T	T1	hex H	Length L
74MMNJ0204	1/8-27	7/16-20	14	31
74MMNJ0404	1/4-18	7/16-20	14	36
74MMNJ0405	1/4-18	1/2-20	14	36
74MMNJ0406	1/4-18	9/16-18	17	36
74MMNJ0606	3/8-18	9/16-18	19	36
74MMNJ0608	3/8-18	3/4-16	19	39
74MMNJ0810	1/2-14	7/8-14	24	48
74MMNJ1212	3/4-14	1.1/16-12	27	53
74MMNJ1616	1-11.1/2	1.5/16-12	36	59
74MMNJ2020	1.1/4-11.1/2	1.5/8-12	46	62

## 74TMJ TAPPO MASCHIO JIC JIC MALE PLUG



part ref.	Thread	Dimension (mm)	
	T	hex H	Length L
74TMJ04	7/16-20	14	21
74TMJ05	1/2-20	14	21
74TMJ06	9/16-18	17	22
74TMJ08	3/4-16	19	26
74TMJ10	7/8-14	24	28
74TMJ12	1.1/16-12	27	33
74TMJ16	1.5/16-12	36	34
74TMJ20	1.5/8-12	37	46
74TMJ24	1.7/8-12	50	42

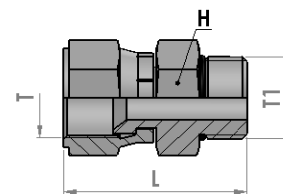
## 74TFJ TAPPO FEMMINA GIREVOLE JIC JIC SWIVEL FEMALE PLUG



part ref.	Thread	Dimension (mm)	
	T	hex H	Length L
74TFJ04	7/16-20	14	18
74TFJ05	1/2-20	16	20
74TFJ06	9/16-18	19	22
74TFJ08	3/4-16	22	24
74TFJ10	7/8-14	27	27
74TFJ12	1.1/16-12	32	30
74TFJ16	1.5/16-12	38	32
74TFJ20	1.5/8-12	50	33
74TFJ24	1.7/8-12	60	39

## 74MFJ

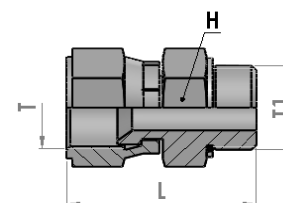
### NIPLES M+F GIREVOLE JIC JIC NIPLES M+F SWIVEL



part ref.	Thread		Dimension (mm)	
	T	T1	hex H	Length L
74MFJ04	7/16-20	7/16-20	14	34
74MFJ05	1/2-20	1/2-20	17	36
74MFJJ06	9/16-18	9/16-18	17	38
74MFJJ08	3/4-16	3/4-16	22	43
74MFJJ10	7/8-14	7/8-14	27	48
74MFJJ12	1.1/16-12	1.1/16-12	32	54

## 74MFGJ

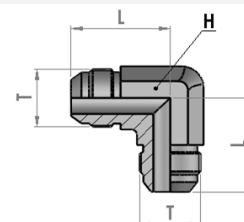
### NIPLES M+F GIREVOLE BSPP OR - JIC BSPP OR - JIC NIPLES M+F SWIVEL



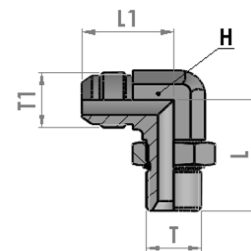
part ref.	Thread		Dimension (mm)	
	T	T1	hex H	Length L
74MFGJ0404	7/16-20	1/4-19	17	32
74MFGJ0405	1/2-20	1/4-19	19	37
74MFGJ0406	9/16-18	1/4-19	19	37
74MFGJ0408	3/4-16	1/4-19	22	41
74MFGJ0606	9/16-18	3/8-19	19	38
74MFGJ0608	3/4-16	3/8-19	22	41
74MFGJ0610	7/8-14	3/8-19	22	34
74MFGJ0808	3/4-16	1/2-14	30	36
74MFGJ0810	7/8-14	1/2-14	30	48
74MFGJ0812	1.1/16-12	1/2-14	30	38
74MFGJ1212	1.1/16-12	3/4-14	36	52

## 75XXJJ

### ADATTATORE 90° M+M JIC JIC ADAPTER M+M 90° ELBOW

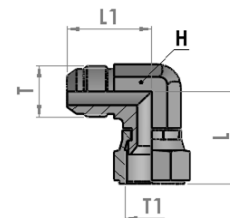


part ref.	Thread		Dimension (mm)	
	T		hex H	Length L
75XXJJ0404	7/16-20		12	23
75XXJJ0505	1/2-20		14	24
75XXJJ0606	9/16-18		14	27
75XXJJ0808	3/4-16		19	32
75XXJJ1010	7/8-14		22	37
75XXJJ1212	1.1/16-12		27	42
75XXJJ1616	1.5/16-12		33	46
75XXJJ2020	1.5/8-12		41	52
75XXJJ2424	1.7/8-12		48	59



## 75XXJGO ADATTATORE 90° ORIENT. M+M JIC - BSPP OR BSPP OR - JIC ADAPTER ADJUSTABLE M+M 90° ELBOW

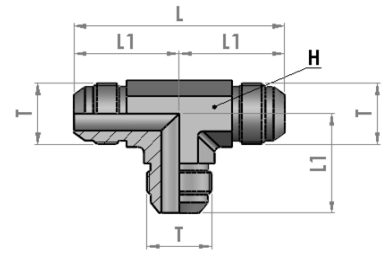
part ref.	Thread		Dimension (mm)		
	T	T1	hex H	Length L	Length L1
75XXJGO0402	1/8-28	7/16-20	12	26	23
75XXJGO0404	1/4-19	7/16-20	14	32	27
75XXJGO0504	1/4-19	1/2-20	14	32	27
75XXJGO0604	1/4-19	9/16-18	14	32	27
75XXJGO0804	1/4-19	3/4-16	19	34	32
75XXJGO0506	3/8-19	1/2-20	19	37	27
75XXJGO0606	3/8-19	9/16-18	19	37	29
75XXJGO0806	3/8-19	3/4-16	19	37	32
75XXJGO1006	3/8-19	7/8-14	22	40	37
75XXJGO0608	1/2-14	9/16-18	22	43	31
75XXJGO0808	1/2-14	3/4-16	22	43	34
75XXJGO1008	1/2-14	7/8-14	22	43	37
75XXJGO1208	1/2-14	1.1/16-12	27	46	42
75XXJGO1012	3/4-14	7/8-14	27	49	37
75XXJGO1212	3/4-14	1.1/16-12	27	49	42
75XXJGO1612	3/4-14	1.5/16-12	33	52	46
75XXJGO1616	1-11	1.5/16-12	33	52	46



## 75XNJJ ADATTATORE 90° M+F GIREVOLE JIC JIC ADAPTER M+F SWIVEL 90° ELBOW

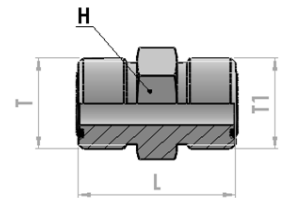
part ref.	Thread		Dimension (mm)		
	T	T1	hex H	Length L	Length L1
75XNJJ0404	7/16-20	7/16-20	12	26	23
75XNJJ0505	1/2-20	1/2-20	14	29	24
75XNJJ0606	9/16-18	9/16-18	14	30	27
75XNJJ0808	3/4-16	3/4-16	19	36	32
75XNJJ1010	7/8-14	7/8-14	22	42	37
75XNJJ1212	1.1/16-12	1.1/16-12	32	45	42
75XNJJ1616	1.5/16-12	1.5/16-12	33	50	46
75XNJJ2020	1.5/8-12	1.5/8-12	41	59	53
75XNJJ2424	1.7/8-12	1.7/8-12	48	66	59





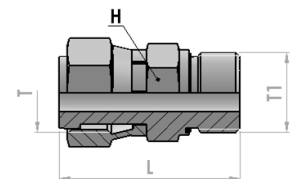
**753MMMJ ADATTATORE T - M JIC**  
ADAPTER M JIC - TEE

part ref.	Thread		Dimension (mm)		
	T		hex H	Length L	Length L1
753MMMJ04	7/16-20		12	45	23
753MMMJ05	1/2-20		14	48	24
753MMMJ06	9/16-18		24	54	27
753MMMJ08	3/4-16		19	63	32
753MMMJ10	7/8-14		22	73	37
753MMMJ12	1.1/16-12		27	84	42
753MMMJ16	1.5/16-12		33	92	46
75MMMJ20	1.5/8-12		41	104	52
75MMMJ24	1.7/8-12		48	118	59



**74MMHH NIPLES DI GIUNZIONE M+M ORFS**  
ORFS NIPLES M+M

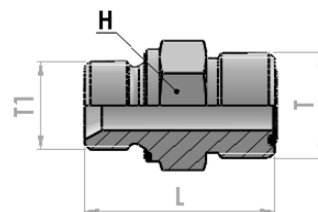
part ref.	Thread	Thread	Dimension (mm)	
	T	T1	hex H	Length L
74MMHH0404	9/16-18	9/16-18	17	28
74MMHH0606	11/16-16	11/16-16	19	31
74MMHH0808	13/16-16	13/16-16	22	36
74MMHH1010	1-14	1-14	27	43
74MMHH1212	1.3/16-12	1.3/16-12	32	47
74MMHH1616	1.7/16-12	1.7/16-12	41	50



**74MFGH NIPLES M+F GIREVOLE ORFS - BSPP**  
ORFS - BSPP NIPLES M+F SWIVEL

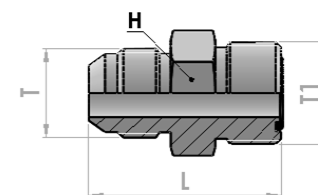
part ref.	Thread	Thread	Dimension (mm)	
	T	T1	hex H	Length L
74MFGH0204	9/16-18	1/8-28	17	34
74MFGH0404	9/16-18	1/4-19	19	38
74MFGH0406	11/16-16	1/4-19	19	41
74MFGH0606	11/16-16	3/8-19	22	40
74MFGH0608	13/16-16	3/8-19	22	48
74MFGH0808	13/16-16	1/2-14	27	50
74MFGH0810	1-14	1/2-14	27	52
74MFGH1212	1.3/16-12	3/4-14	32	54
74MFGH1616	1.7/16-12	1-11	41	67

**74MMGH NIPLES DI RIDUZIONE M+M BSPP - ORFS**  
ORFS - BSPP - REDUCTION NIPLES M+M



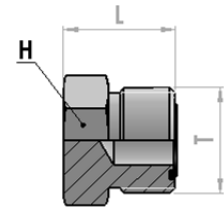
part ref.	Thread	Thread	Dimension (mm)	
	T	T1	hex H	Length L
74MMGH0404	9/16-18	1/4-19	19	31
74MMGH0406	11/16-16	1/4-19	19	32
74MMGH0604	9/16-18	3/8-19	22	32
74MMGH0606	11/16-16	3/8-19	22	33
74MMGH0608	11/16-16	1/2-14	27	37
74MMGH0804	13/16-16	1/4-19	22	35
74MMGH0806	13/16-16	3/8-19	22	35
74MMGH0808	13/16-16	1/2-14	27	39
74MMGH0812	13/16-16	3/4-14	32	42
74MMGH1006	1-14	3/8-19	27	43
74MMGH1008	1-14	1/2-14	27	41
74MMGH1012	1-14	3/4-14	32	45
74MMGH1208	1.3/16-12	1/2-14	32	49
74MMGH1212	1.3/16-12	3/4-14	32	46
74MMGH1216	1.3/16-12	1-11	41	49
74MMGH1612	1.7/16-12	3/4-14	41	52
74MMGH1616	1.7/16-12	1-11	41	50

**74MMHJ NIPLES DI RIDUZIONE M+M ORFS - JIC**  
JIC - ORFS - REDUCTION NIPLES M+M



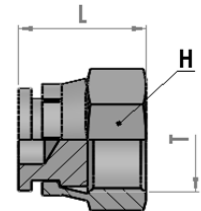
part ref.	Thread	Thread	Dimension (mm)	
	T	T1	hex H	Length L
74MMHJ0404	7/16-20	9/16-18	17	32
74MMHJ0606	9/16-18	11/16-16	19	34
74MMHJ0808	3/4-16	13/16-16	22	40
74MMHJ1010	7/8-14	1-14	27	47
74MMHJ1212	1.1/16-12	1.3/16-12	32	52
74MMHJ1616	1.5/16-12	1.7/16-12	41	55
74MMHJ2020	1.5/8-12	1.7/16-12	48	58

**74TMH**      **TAPPO MASCHIO ORFS**  
**ORFS MALE PLUG**



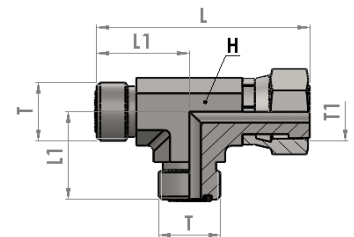
part ref.	Thread	Dimension (mm)	
	T	hex H	Length L
74TMH0004	9/16-18	17	17
74TMH0006	11/16-16	19	19
74TMH0008	13/16-16	22	22
74TMH0010	1-14	27	26
74TMH0012	1.3/16-12	32	28
74TMH0016	1.7/16-12	41	28
74TMH0020	1.11/16-12	46	28

**74TFH**      **TAPPO FEMMINA ORFS**  
**ORFS SWIVEL FEMALE PLUG**



part ref.	Thread	Dimension (mm)	
	T	hex H	Length L
74TFH0004	9/16-18	17	17
74TFH0006	11/16-16	22	18
74TFH0008	13/16-16	24	22
74TFH0010	1-14	30	25
74TFH0012	1.3/16-12	36	27
74TFH0016	1.7/16-12	41	29
74TFH0020	1.11/16-12	50	29

**74TMMF**      **ADATTATORE M + M + F GIREVOLE ORFS**  
**ADAPTER M + M + SWIVEL F - ORFS TEE**



part ref.	Thread	Thread	Dimension (mm)		
	T	T1	hex H	Length L	Length L1
74TMMF0404	9/16-18	9/16-18	14	48	22
74TMMF0606	11/16-16	11/16-16	19	55	25
74TMMF0808	13/16-16	13/16-16	19	66	28
74TMMF1010	1-14	1-14	27	75	34
74TMMF1212	1.3/16-12	1.3/16-12	30	84	38
74TMMF1616	1.7/16-12	1.7/16-12	36	95	42
74TMMF2020	1.11/16-12	1.11/16-12	41	103	45